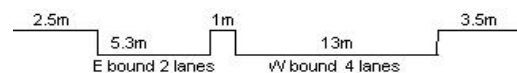
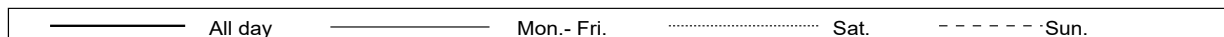
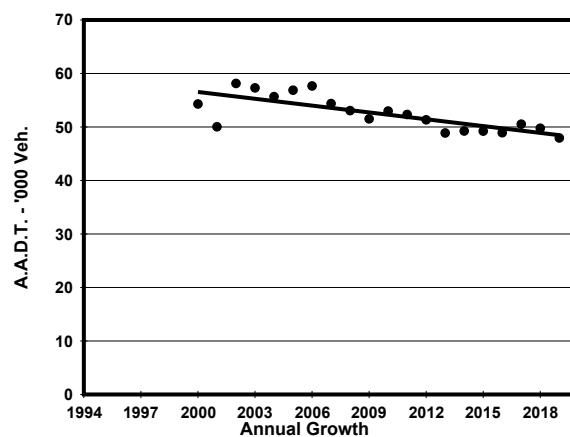
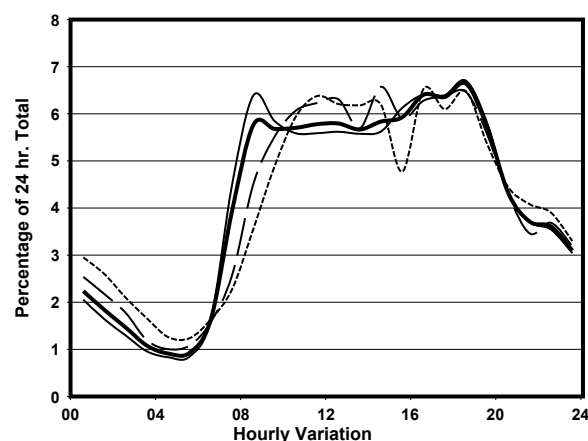
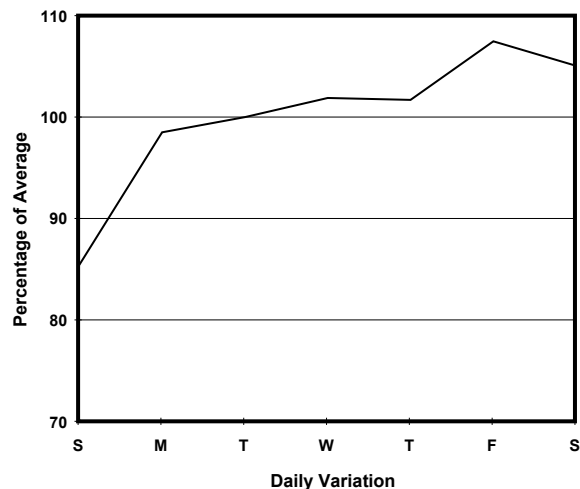
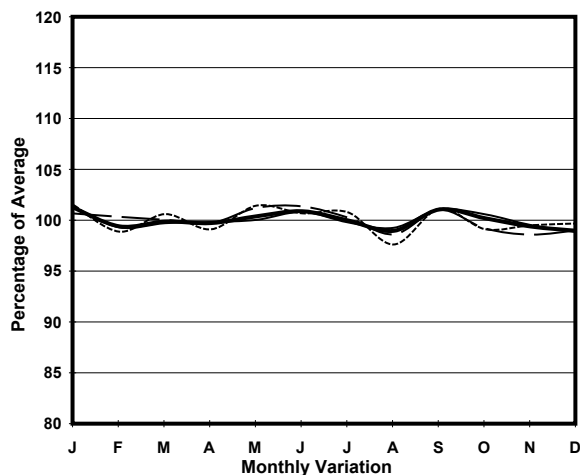


YEAR 2019
 COVERAGE (B) STATION 4203
 ROAD NETWORK MAJOR
 ROAD TYPE PRIMARY DISTRIBUTOR

LINK PRINCE EDWARD RD W (from EMBANKMENT RD to YUEN NGAI ST)



1. TRAFFIC FLOW VARIATION AND GROWTH



2. TRAFFIC CHARACTERISTICS (BY DIRECTION)

Parameter	All - Day	Mon. - Fri.	Sat.	Sun.
EAST BOUND				
A.A.D.T.	1740	1720	2020	1680
R 12 / 24 - %	79.2	78.8	80.7	79.7
R 16 / 24 - %	92.5	92.3	92.6	93.3
AM Peak Hour	0800-0900	0800-0900	0900-1000	0900-1000
One-way flow at AM peak hour	100	110	120	110
T - % (AM)	-	5	-	-
PM Peak Hour	1600-1700	1600-1700	1700-1800	1700-1800
One-way flow at PM peak hour	130	130	160	140
T - % (PM)	-	-	-	-
Prop.of commercial vehicles - 16 hr.	-	1.8	-	-
WEST BOUND				
A.A.D.T.	46210	47540	48720	39600
R 12 / 24 - %	69.1	70.1	68	64.9
R 16 / 24 - %	86.6	87.5	85.2	82.8
AM Peak Hour	0800-0900	0800-0900	0900-1000	0900-1000
One-way flow at AM peak hour	2670	3040	2680	1910
T - % (AM)	-	5	-	-
PM Peak Hour	1800-1900	1800-1900	1800-1900	1600-1700
One-way flow at PM peak hour	3080	3200	3170	2580
T - % (PM)	-	4.3	-	-
Prop.of commercial vehicles - 16 hr.	-	5.2	-	-

3. OTHER INFORMATION AND COMMENT

4. Vehicle classification and occupancy - Monday to Friday

Time		Class of vehicle									
		Motor Cycle	Private Car	Taxi	Private LB	PLB	Goods veh.		Non Fr. Bus	Fr. Bus	
							Light	M & H		SD	DD
0700-0800	Pro	3.6	29.3	25.9	2.6	8.3	16.4	3.8	5.0	0.2	4.9
	Ocp	1.1	1.3	2.0	3.6	11.5	1.4	1.4	4.5	13.8	40.5
0800-0900	Pro	2.2	45.9	19.0	0.8	10.5	16.7	1.2	0.9	0.2	2.7
	Ocp	1.1	1.3	2.2	6.3	16.1	1.4	1.3	14.7	16.8	49.8
0900-1000	Pro	1.2	46.9	15.5	1.1	6.9	22.6	2.1	0.7	0.1	2.9
	Ocp	1.1	1.3	2.1	2.3	15.3	1.4	1.3	16.0	10.0	37.5
1000-1100	Pro	1.2	39.2	23.7	0.6	5.6	25.6	1.1	0.5	0.2	2.3
	Ocp	1.1	1.3	1.6	3.3	12.3	1.3	1.4	16.0	12.2	37.4
1100-1200	Pro	0.7	43.5	22.8	0.9	5.1	21.6	2.2	0.9	0.1	2.1
	Ocp	1.2	1.4	2.0	3.8	12.1	1.4	1.4	1.7	8.3	44.1
1200-1300	Pro	1.0	45.7	22.5	1.4	4.3	21.0	1.1	1.0	0.1	1.9
	Ocp	1.0	1.2	2.0	7.4	12.4	1.4	1.4	22.6	11.3	36.4
1300-1400	Pro	1.7	39.7	24.8	2.4	5.4	21.2	0.9	1.1	0.2	2.7
	Ocp	1.1	1.5	1.8	2.1	11.8	1.3	1.5	7.6	9.8	35.0
1400-1500	Pro	2.4	39.8	22.7	0.7	4.6	24.3	1.9	1.4	0.1	2.2
	Ocp	1.0	1.4	2.1	2.0	11.5	1.4	1.4	3.0	32.5	37.5
1500-1600	Pro	2.3	42.7	22.1	2.8	3.8	21.8	1.5	0.9	0.2	2.1
	Ocp	1.1	1.5	1.9	11.4	13.6	1.4	1.3	6.3	18.0	37.3
1600-1700	Pro	2.4	44.3	19.3	0.9	5.8	22.1	1.1	1.7	0.2	2.2
	Ocp	1.0	1.5	1.9	1.8	12.0	1.6	1.3	4.3	16.2	30.7
1700-1800	Pro	3.8	49.4	20.7	0.9	5.8	15.0	1.6	0.6	0.1	2.0
	Ocp	1.1	1.3	1.8	3.3	14.4	1.6	1.0	1.2	17.0	37.1
1800-1900 Peak hour	Pro	4.8	50.4	23.0	0.5	6.7	10.5	0.9	1.2	0.1	1.9
	Ocp	1.0	1.4	1.8	2.0	15.3	1.5	1.4	22.9	11.0	43.2
1900-2000	Pro	3.7	50.5	25.3	0.1	10.5	6.6	0.6	0.7	0.1	1.9
	Ocp	1.1	1.2	1.7	1.0	9.6	1.5	1.0	1.0	12.0	32.0
2000-2100	Pro	3.1	44.6	32.9	0.2	9.6	5.6	0.4	0.6	0.1	2.9
	Ocp	1.1	1.5	1.8	4.0	7.6	1.7	2.0	1.0	6.7	19.9
2100-2200	Pro	2.3	44.6	29.4	0.0	11.8	7.1	1.4	0.5	0.2	2.8
	Ocp	1.1	1.2	1.6	0.0	6.1	1.6	1.3	1.0	6.0	10.6
2200-2300	Pro	2.3	41.1	37.6	0.0	10.0	4.4	0.5	0.5	0.2	3.5
	Ocp	1.1	1.5	1.6	0.0	6.1	1.6	2.5	5.5	8.3	9.7
16 hours	Pro	2.4	44.2	23.4	1.0	6.9	17.0	1.4	1.1	0.1	2.4
	Ocp	1.1	1.4	1.9	5.1	11.8	1.4	1.3	8.3	12.9	34.5

Legend: Pro. Proportion of vehicles in % (Sum may not add up to 100% due to figure rounding)*

Ocp. Average occupancy of vehicles including both driver and passengers*

M&H Medium and Heavy

* All traffic data are collected from combined bounds